

## Extremity MRI

Uncompromising diagnostic quality  
with superior patient comfort.

To schedule an Extremity MRI  
at our Quakerbridge office in Mercerville,  
call **609.921.8211**.

Or visit **[www.PrincetonRadiology.com](http://www.PrincetonRadiology.com)**  
to request an appointment.

 **Princeton Radiology**  
*Excellence in Imaging*

**Mercerville**  
Quakerbridge Office  
8 Quakerbridge Plaza



 **Princeton Radiology**  
*Excellence in Imaging*

## Introducing the New Esaote O-Scan Extremity MRI.

Now exclusively available  
at our Quakerbridge office.



- Wide range of diagnostic applications for the elbow, wrist, hand, knee, ankle, and foot
- Advanced image processing technology with ability to reduce distortion in patients with implanted metal
- No claustrophobia – the scan is performed with only the injured arm or leg in the machine, while the rest of your body relaxes outside the unit on a comfortable reclining chair
- Fast exam times and responsive appointment availability for injuries and urgent diagnostic needs

## Now we can offer the best of both worlds:

The diagnostic accuracy clinicians need  
and a less stressful experience for patients.

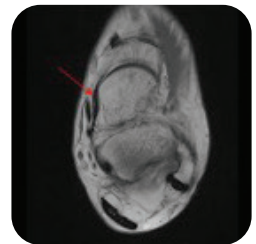
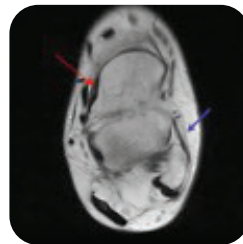
Extremity MRI makes it possible to create outstanding diagnostic images of the bones, muscles, and joints of the arm, hand, leg, and foot, without subjecting the patient to the anxiety and longer exam time of a scan in a full-size MRI unit.

As shown by examples below, our Extremity MRI can produce high-resolution scans that equal or exceed the clarity and diagnostic precision of images from full-size, higher field strength units.

### ANKLE SPRING LIGAMENT (SAME PATIENT)

Esaote Extremity

Siemens Wide Bore 1.5T



### CALCANEAL FRACTURE (SAME PATIENT)

Esaote Extremity

Siemens Wide Bore 1.5T

